



jordan fishwick

Macclesfield Road Whaley Bridge High Peak



Macclesfield Road Whaley Bridge High Peak SK23 7DN

£384,500



The Property

****SOUTH FACING GARDEN**** Immaculately presented and standing in large gardens with delightful views, a stunning three bedroom semi-detached home. Re-furbished and much improved in recent years and providing spacious, high quality accommodation, this superb family home has to be viewed! Aluminum double glazing, gas central heating and comprising: entrance hall, living room, separate dining room, re-fitted kitchen with Neff appliances, three first floor bedrooms and a luxury bathroom. Ample off road parking, detached 20ft garage and southerly facing 100ft rear garden. Viewing highly recommended.



- Immaculately Presented
- 100FT South Facing Garden
- Stone Built Semi-Detached
- Three Bedrooms
- Ample Driveway Parking Plus Garage
- Refurbished In Recent Years
- Convenient Position
- Fabulous Views
- Kitchen with Neff Appliances

Postcode

SK23 7DN

EPC Rating

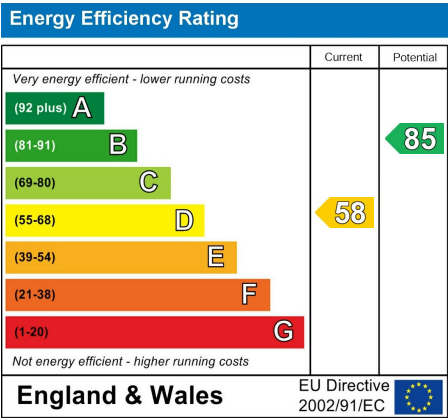
D

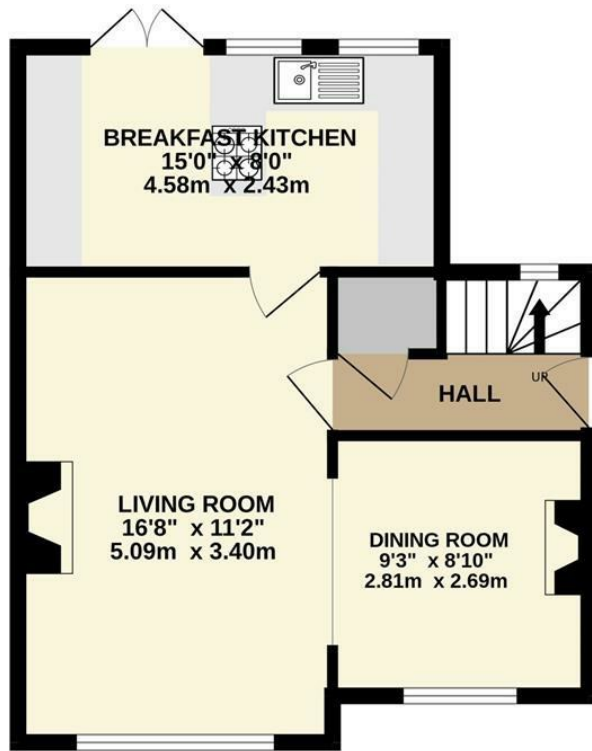
Local Authority

High Peak

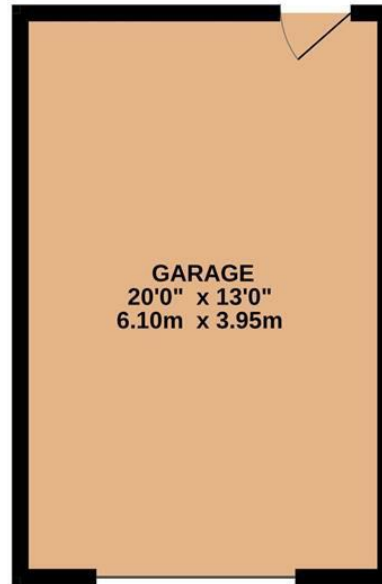
Council Tax

C





GROUND FLOOR



1ST FLOOR

Whilst every attempt has been made to ensure the accuracy of the floorplan contained here, measurements of doors, windows, rooms and any other items are approximate and no responsibility is taken for any error, omission or mis-statement. This plan is for illustrative purposes only and should be used as such by any prospective purchaser. The services, systems and appliances shown have not been tested and no guarantee as to their operability or efficiency can be given.
Made with Metropix ©2023



These particulars are believed to be accurate but they are not guaranteed and do not form a contract. Neither Jordan Fishwick nor the vendor or lessor accept any responsibility in respect of these particulars, which are not intended to be statements or representations of fact and any intending purchaser or lessee must satisfy himself by inspection or otherwise as to the correctness of each of the statements contained in these particulars. Any floorplans on this brochure are for illustrative purposes only and are not necessarily to scale.

Offices at: Chorlton, Didsbury, Disley, Hale, Glossop, Macclesfield, Manchester Deansgate, Manchester Whitworth Street, New Mills, Sale, Wilmslow and Withington

14 Market Street, Disley, Cheshire, SK12 2AA

01663 76 78 78

disley@jordanfishwick.co.uk

www.jordanfishwick.co.uk